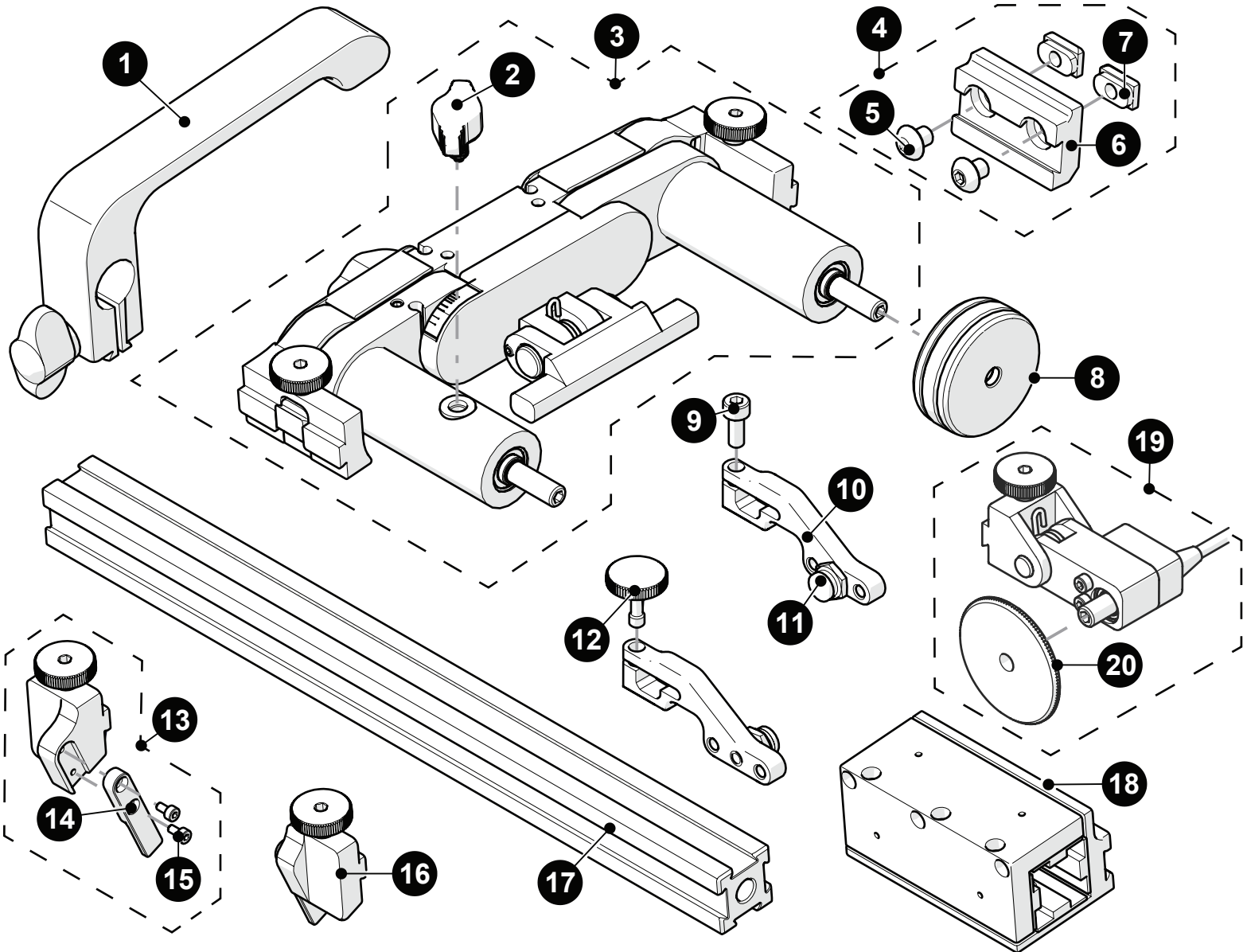


# Spare Parts

■ **STIX** SCANNER

DXG001-



BOM ID	Description	Description
1	CMS004	Dovetail Handle
2	DXS005	Brake Knob
3	DXS001	Articulated Side Frame Subassembly
4	DXS008	Flange Scanner PPS Spacer
5	MD074-006	BHCS, M5 x 0.8 X 6 mm, SST
6	DX0020	Flange Scanner PPS Spacer Black
7	BT0014	Dovetail Nut
8	BTS031	Magnetic Wheel
9	MD050-010	SHCS, M4 x 0.7 x 10 mm, SST
10	See Arm Styles	
11	See Pivot Button Style	
12	PH0082	Knurled Knob, M4 x 0.7 x 10 mm, 3 mm stand off, SST
13	DXS006-L	Flange Scanner Guide, Left
14	DX0016	Guide Finger
15	MD047-004	SHCS, M2 x 0.4 X 4 mm, SST
16	DXS006-R	Flange Scanner Guide, Right
17	BG0090-25	Frame bar with ruler, 25 cm (9.8 in)
18	DXS007	Flange Scanner Slider
19	BGS053-X-05	Spring-Loaded Encoder (see Encoder Connector Type)
20	BG0069	Encoder Wheel, for spring-loaded encoder

# Spare Parts









## STIX SCANNER

### Encoder Connector Type




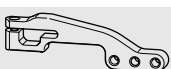






Connector Type	Company/Instrument	Connector Type	Company/Instrument
B	Olympus OmniScan MX Zetec Topaz	G	Sonotron Isonic 25xx
C	Olympus Focus LT Zetec Z-Scan Eddyfi Ectane 2	U	Sonatest Veo / Prisma
E	Olympus OmniScan SX/MX2/X3 M2M MANTIS/GEKKO LEMO	V	Pragma PAUT
F	TD ( <i>Technology Design</i> )	AD	Sonatest Veo / Prisma - Single Axis

**NOTE:** Additional encoder connector types available. Contact JIREH for more information.

### Pivot Button Style

Pivot Hole Size	Wedge Type		Pivot Hole Size	Wedge Type	
<b>01</b> 8.0 mm (0.32 in)	Olympus PA		<b>02</b> 5.0 mm (0.20 in)	Olympus TOFD	
<b>03</b> 2.7 mm (0.11 in)	Sonatest DAAH PA		<b>04</b> 9.5 mm (0.38 in)	-	
<b>06</b> 3.0 mm (0.12 in)	-		<b>07</b> 2.3 mm (0.09 in)	-	
<b>08</b> Conical Head	-		<b>09</b> 5 mm (0.20 in) Internal	Zetec PA/TOFD	

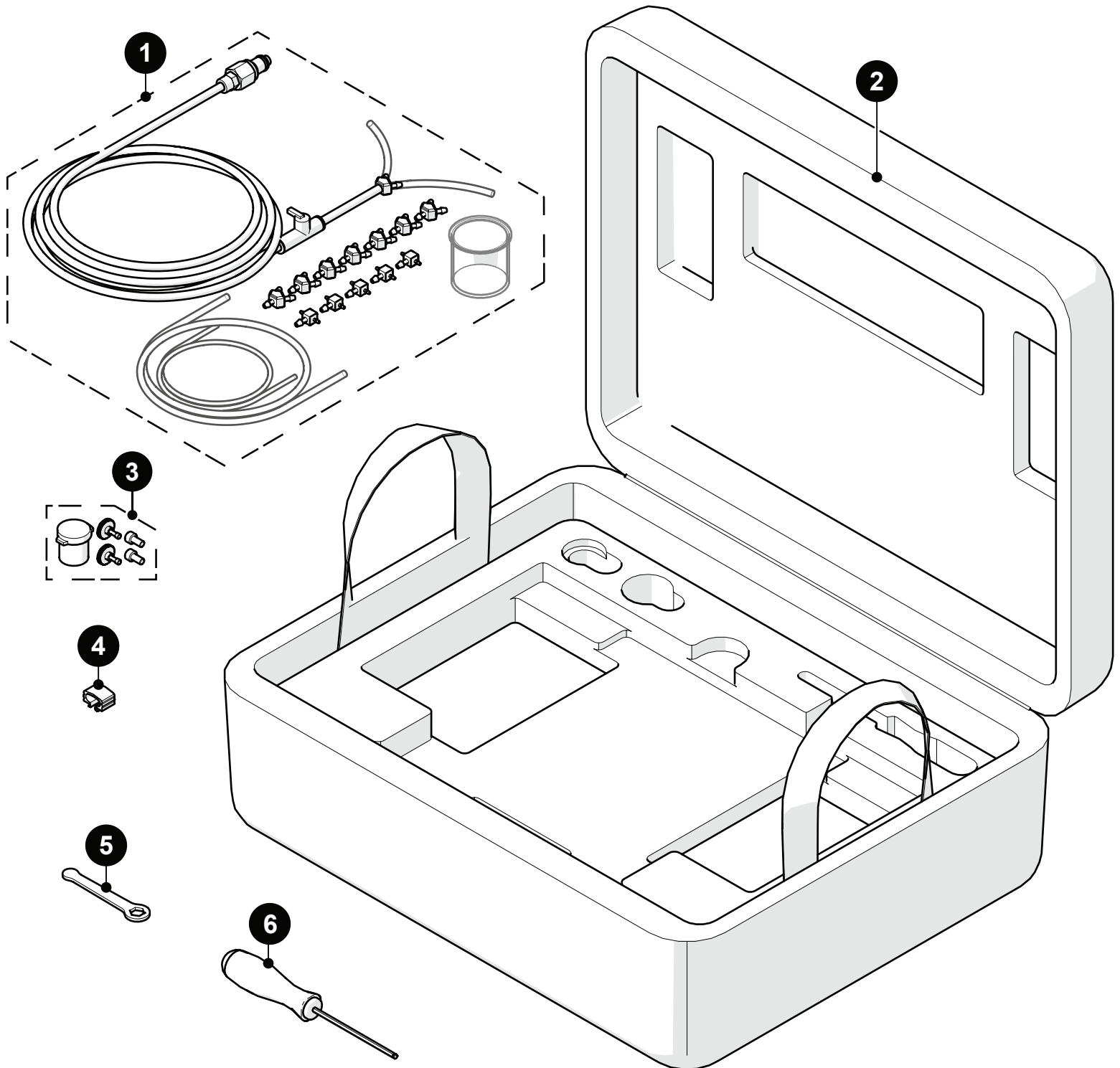
### Arm Style

Arm Style	Part #		Arm Style	Part #	
<b>A</b> Standard, Flat	PH0090		<b>B</b> Short, Flat	PH0089	
<b>C</b> Long, Flat	PH0099		<b>D</b> Standard, Drop	PH0093	
<b>E</b> Short, Drop	PH0092		<b>F</b> Long, Drop	PH0094	
<b>G</b> Standard, Extra-Drop	PH0096		<b>H</b> Short, Extra-Drop	PH0095	
<b>I</b> Extra-Short, Flat	PH0159		<b>J</b> Extra-Short, Drop	PH0161	

# Spare Parts

■ **STIX** KIT

DXG001-



BOM ID	Part #	Description
1	CMG007	Irrigation Kit, 2-4 Probe
2	DXA002	STIX Flange Case
3	PHG014	2 Probe Spare Parts Kit
4	BG0091	Cable Clips
5	EA470	3/8 in Wrench
6	EA414	3 mm Hex Driver