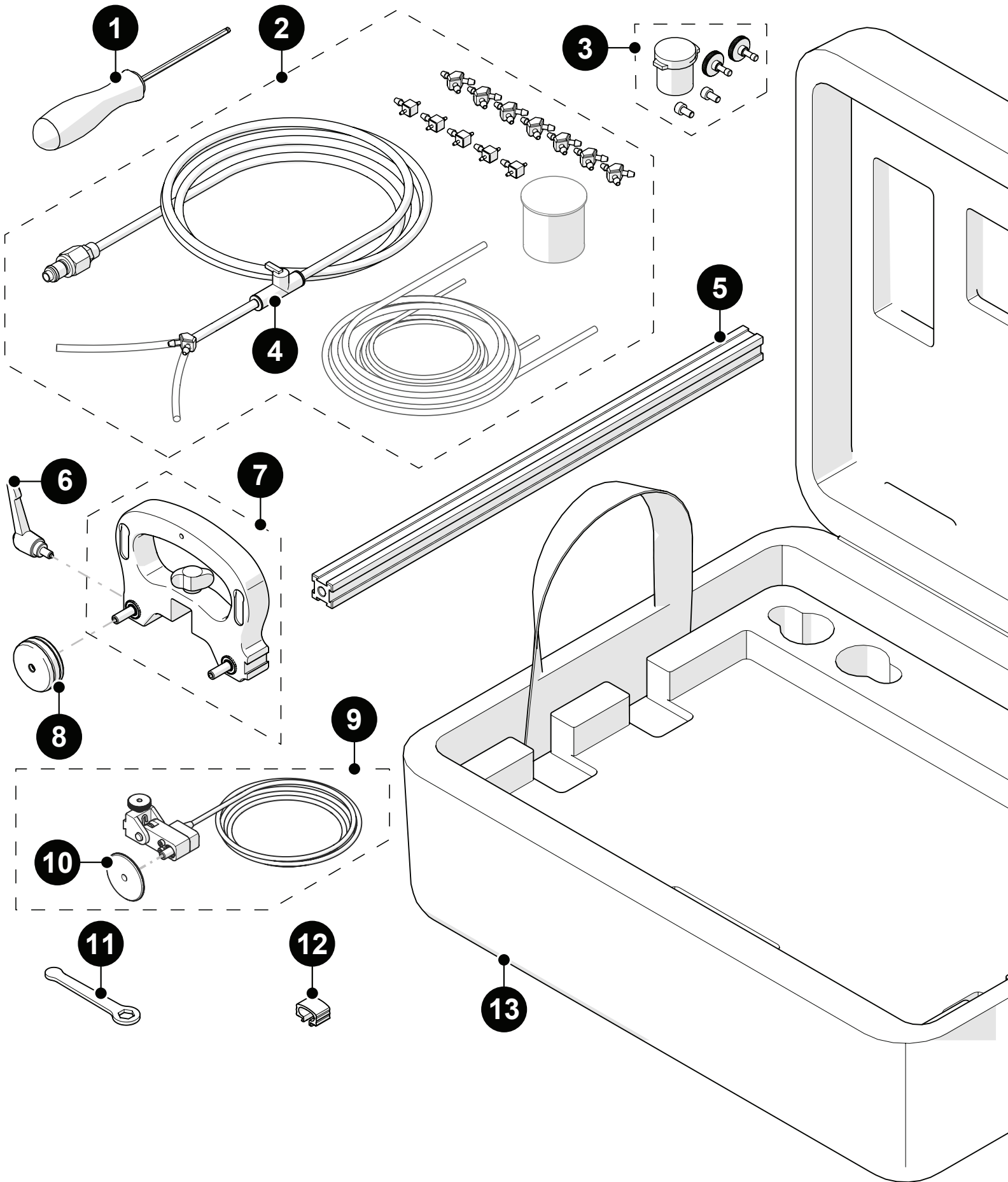


# Spare Parts

■ **STIX** KIT

BGG002 | BGG003



# Spare Parts



BGG002 | BGG003

BOM ID	Part #	Description
1	EA414	3 mm hex driver
2	CMG007	Irrigation kit, 2-4 probe
3	PHG014	2 probe spare parts kit
4	LA034	Irrigation Shutoff Valve
5	BG0038-40	Frame bar, 40 cm (15.7 in) (see frame bars)
6	BTS018	Brake handle
7	BGS058	Wheel block without brake handle (magnetic wheels not included)
8	BTS031	Magnetic wheel
9	BGS053-X-05	Spring-loaded encoder (see Encoder Connector Type)
10	BG0069	Encoder wheel, for spring-loaded encoder
11	EA470	3/8 in wrench
12	BG0091	Cable clip
13	BGA005	STIX case

## Encoder Connector Type

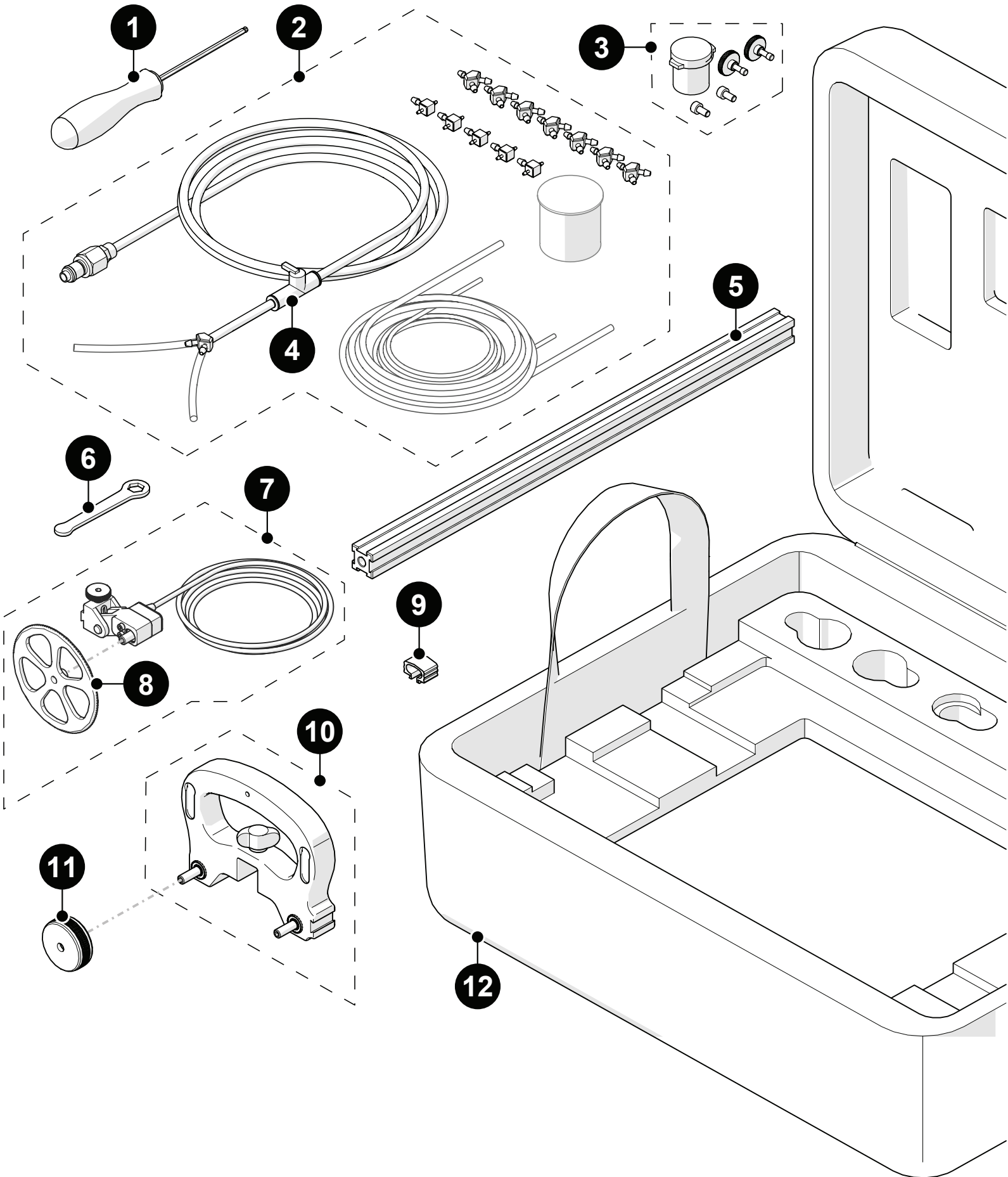
Connector Type	Company/Instrument	Connector Type	Company/Instrument
B	Olympus OmniScan MX Zetec Topaz	G	Sonotron Isonic 25xx
C	Olympus Focus LT Zetec Z-Scan Eddyfi Ectane 2	U	Sonatest Veo / Prisma
E	Olympus OmniScan SX/MX2/X3 M2M MANTIS/GEKKO LEMO	V	Pragma PAUT
F	TD (Technology Design)	AD	Sonatest Veo / Prisma - Single Axis

**NOTE:** Additional encoder connector styles are available.  
(contact Jireh Industries Ltd. on page 1 for details)

# Spare Parts

■ STIX

BGG014



Edmonton Office: 780.922.4534  
Houston Office: 832.564.0626  
Rotterdam Office: +31 85 002 0801

Email: [info@jireh.com](mailto:info@jireh.com)  
Web: [jireh.com](http://jireh.com)

 JIREH

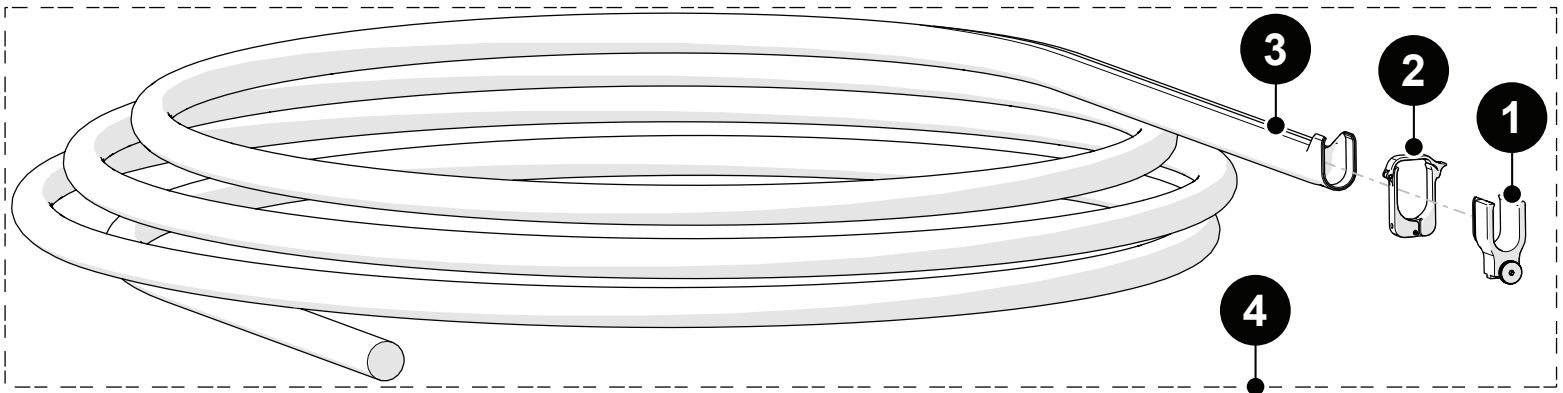
# Spare Parts

■ STIX

BGG0014

BOM ID	Part #	Description
1	EA414	3 mm hex driver
2	CMG007	Irrigation kit, 2-4 probe
3	PHG014	2 probe spare parts kit
4	LA034	Irrigation Shutoff Valve
5	BG0038-40	Frame bar, 40 cm (see frame bars)
6	EA470	3/8 in wrench
7	BGS071-__	High temperature spring-loaded encoder (see Encoder Connector Type)
8	BG0108	High temperature encoder wheel, for high temperature spring-loaded encoder
9	BG0091	Cable clip
10	BGS058	Wheel block with handle (HT magnetic wheels not included)
11	BTS052	High temperature magnetic wheel
12	BGA005	STIX case

## High Temperature Cable Management














BOM ID	Part #	Description
1	CES090	High Temperature Cable Management Mount
2	CXS114	High Temperature Cable Management Clamp
3	CX0537-04.5	High Temperature Cable Management Sleeving, 4.5 m (14.8 ft)
4	CES089-04.5	High Temperature Cable Management, 4.5 m (14.8 ft)

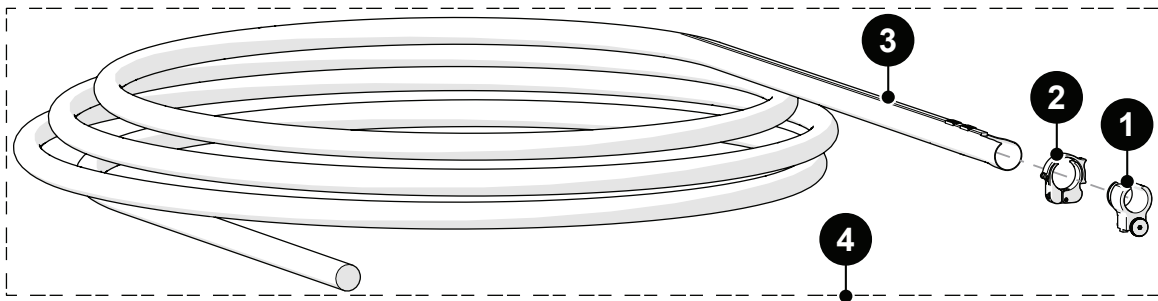
# Spare Parts

## STIX

### Frame Bars

Part #	Length		Part #	Length	
BG0038-05	5 cm (1.97 in)		BG0038-10	10 cm (3.94 in)	
BG0038-15	15 cm (5.91 in)		BG0038-20	20 cm (7.87 in)	
BG0038-25	25 cm (9.84 in)		BG0038-30	30 cm (11.81 in)	
BG0038-35	35 cm (13.78 in)		BG0038-40	40 cm (15.75 in)	
BG0038-45	45 cm (17.72 in)		BG0038-50	50 cm (19.69 in)	
BG0038-55	55 cm (21.65 in)				

### Cable Management



BOM ID	Part #	Description
1	CES067	Cable Management Mount, Dovetail Mount
2	CES066	Cable Management Clamp, Dovetail Mount
3	See Cable Management Sleeving	
4	CES044- <u>    </u>	Cable Management: Dovetail (see cable management sleeving)

### Cable Management Sleeving

Part #	Length
CX0141	4.5 m (14.7 ft)
CX0145	9.5 m (31.2 ft)

