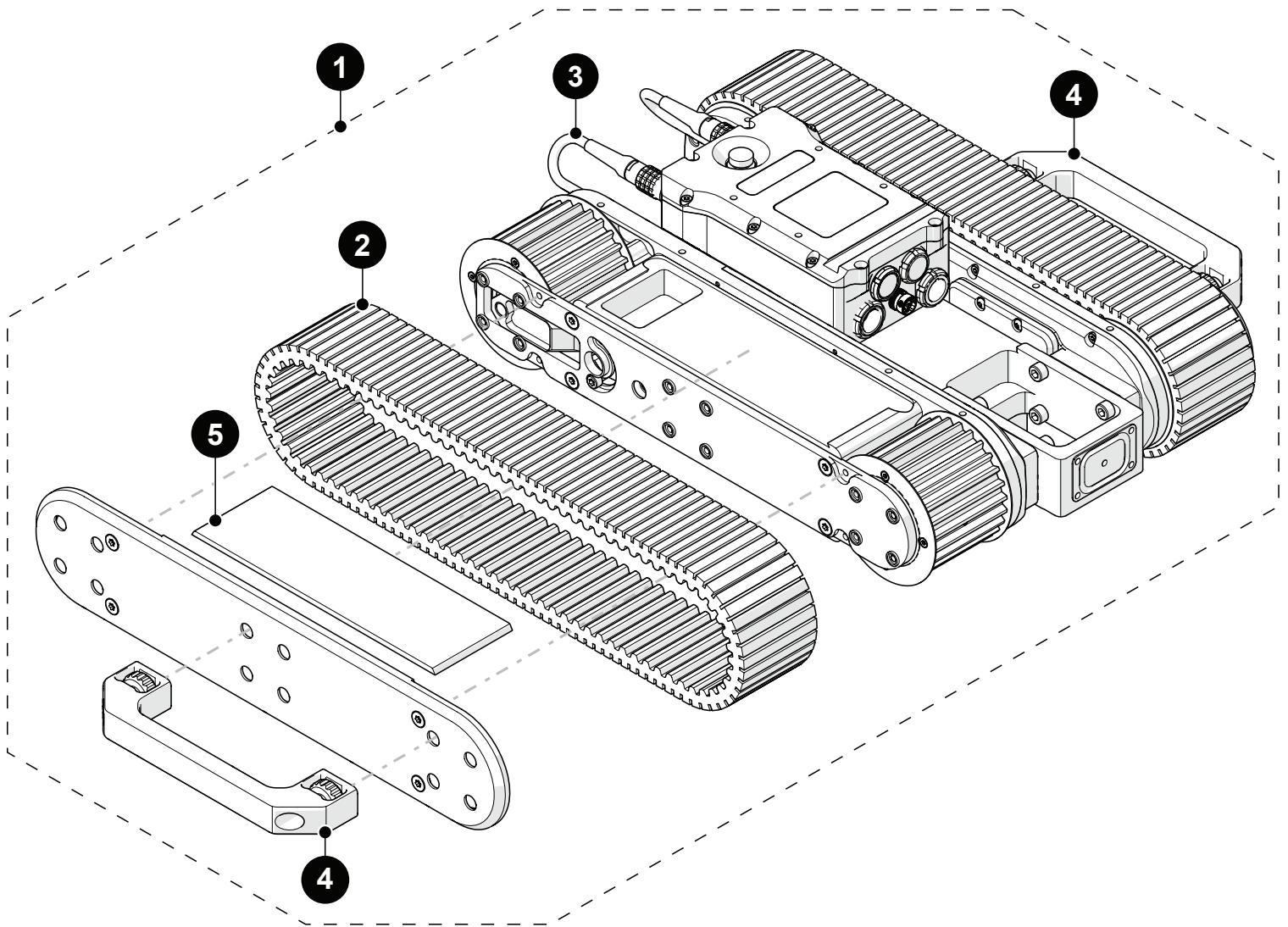


Spare Parts

■ TERAX

ENG002-

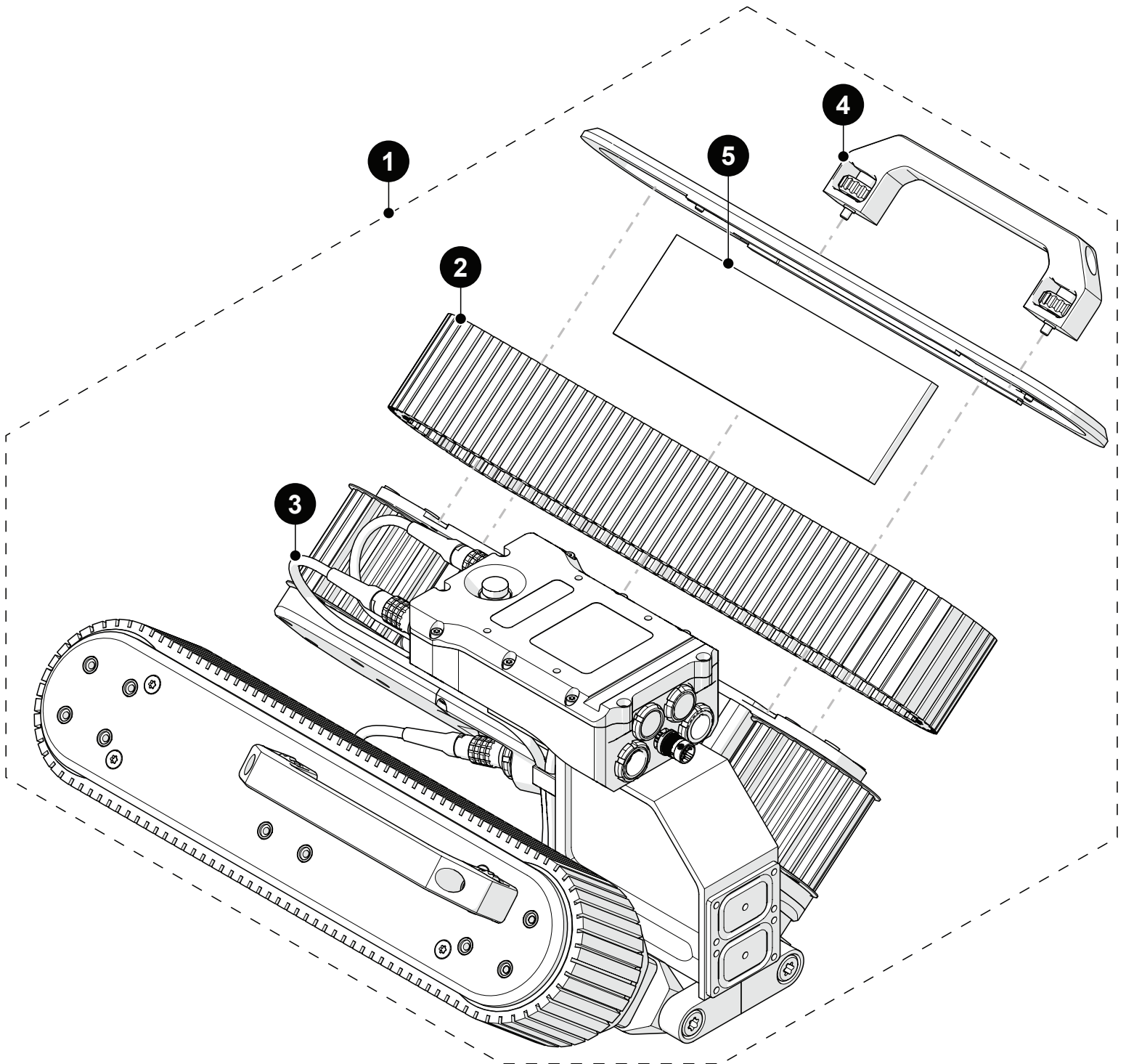


BOM ID	Part #	Description
1	ENA002	TERAX - Internal Base Crawler
2	EN0047	Drive Track
3	UMA020-0.55	Motor Pod Cable
4	ENS010	Handle, Threaded
5	EN0017	Slide Plate

Spare Parts

■ TERAX

ENG001-

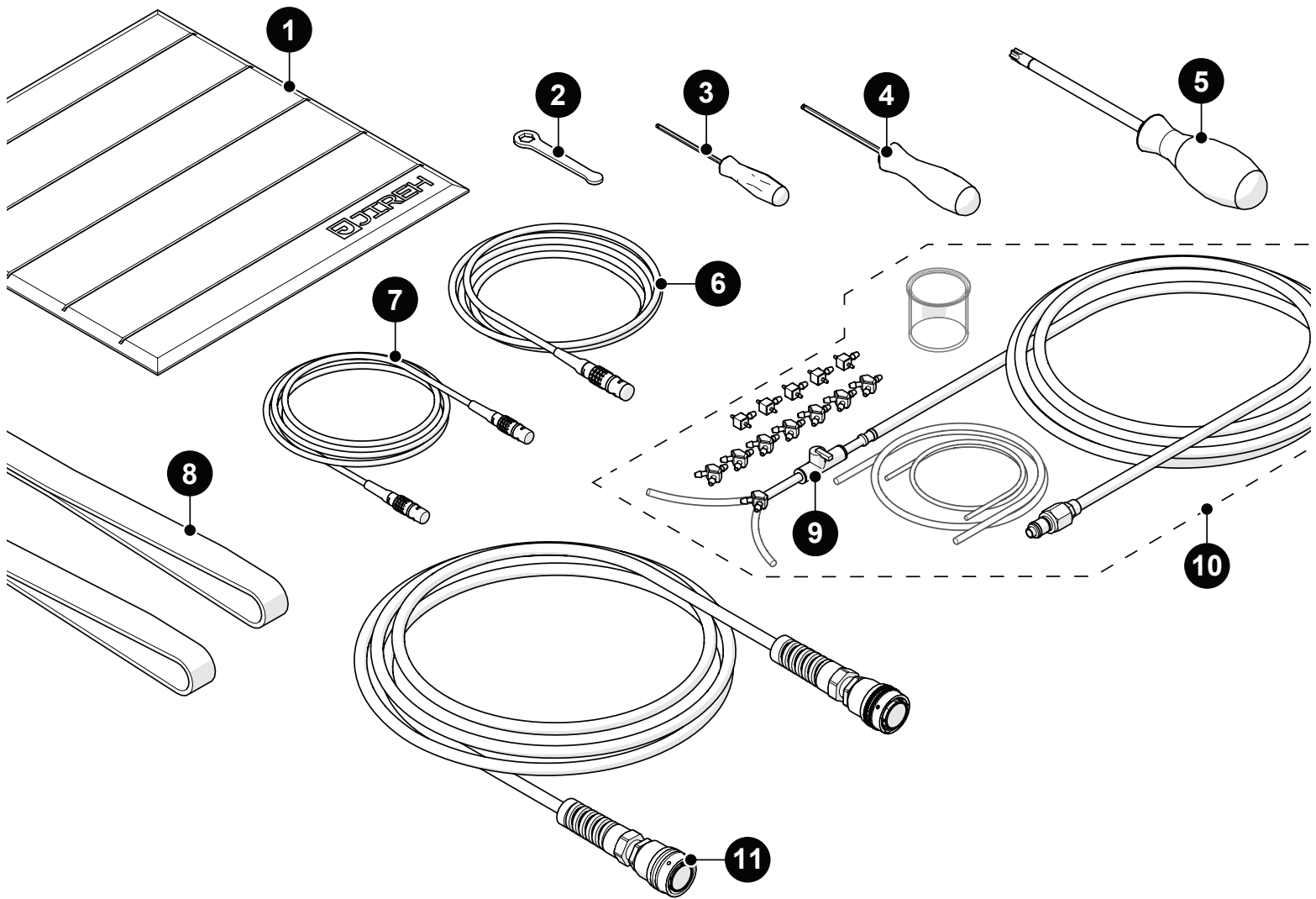


BOM ID	Part #	Description
1	ENA001	TERAX - Internal Base Crawler
2	EN0047	Drive Track
3	UMA020-0.55	Motor Pod Cable
4	ENS010	Handle, Threaded
5	EN0017	Slide Plate

Spare Parts

■ TERAX

Kit Components

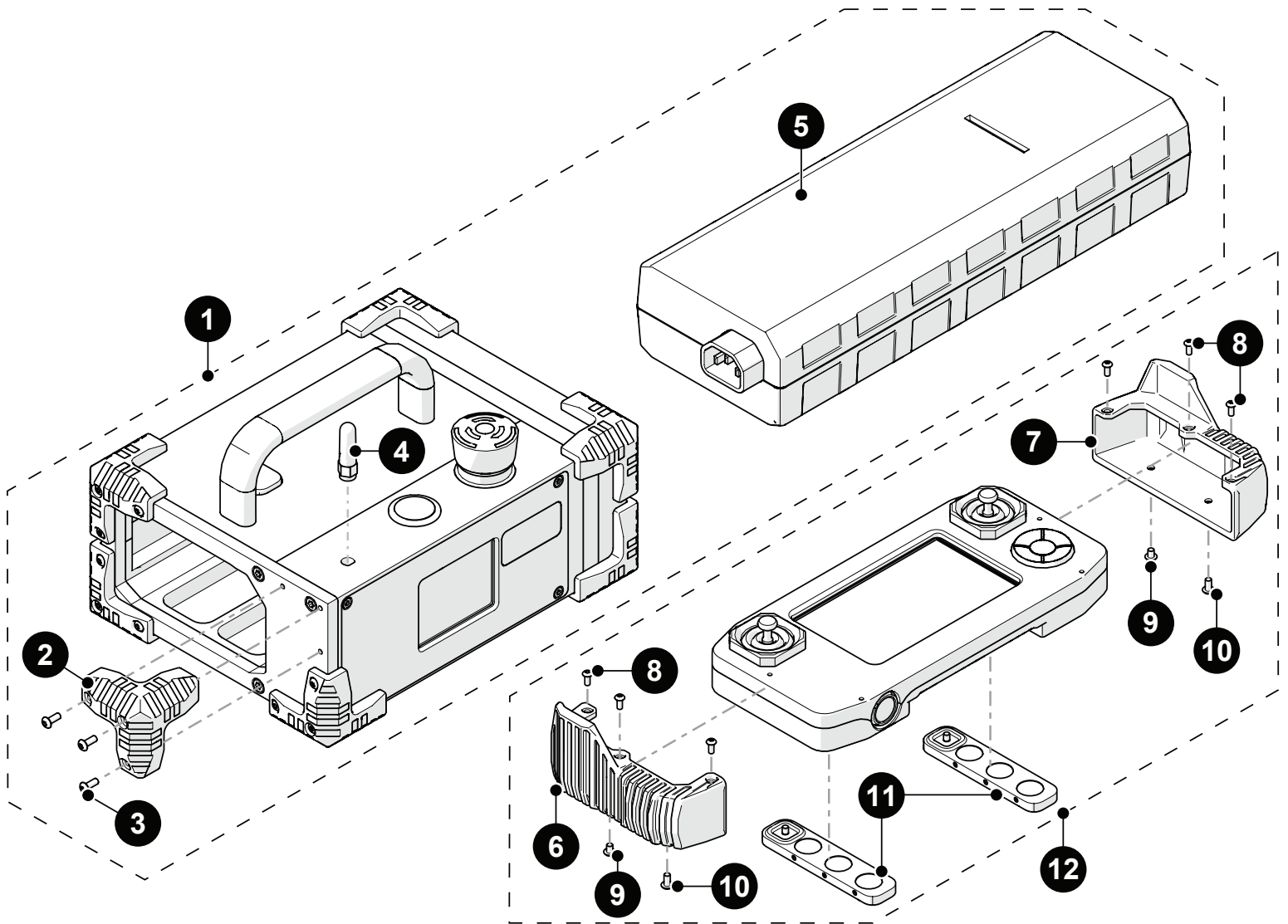


BOM ID	Part #	Description
1	AAS061	Installation/removal mat
2	EA470	10 mm (3/8 in) wrench
3	EA599	2.5 mm (0.098 in) hex driver
4	EA414	3 mm (0.118 in) hex driver
5	EA627	T45 Driver
6	UMA025-__	Encoder cable (see Encoder Connector Type)
7	UMA017-06	Auxiliary cable: 6 m (19.6 ft)
8	EA243	Sling
9	LA034	Irrigation Shutoff Valve
10	CMG009	Irrigation kit, 2-4 probe, large tube (various lengths available)
11	UMA044-__	Umbilical, Ethernet (see Umbilical, Ethernet length)

Spare Parts

■ TERAX

Kit Componets



BOM ID	Part #	Description
1	ERA001-__	System controller (<i>see Power Cord Type</i>)
2	DY0011	Rubber bumper
3	MD411-008	BHCS-TX, M3x0.5 X 8mm ISO 7380-1 A2
4	SU004	Antenna
5	CXS122	Power supply
6	DM0088-L	Handheld controller bumper (<i>left</i>)
7	DM0088-R	Handheld controller bumper (<i>right</i>)
8	MD409-006	BHCS-TX, M2.5x0.5 X 6mm ISO 7380-1 A2
9	MD411-004	BHCS-TX, M3x0.5 X 4mm ISO 7380-1 A2
10	MD411-006	BHCS-TX, M3x0.5 X 6mm ISO 7380-1 A2
11	DMS005	Handheld controller magnet holder
12	DMA006	Handheld controller

Spare Parts

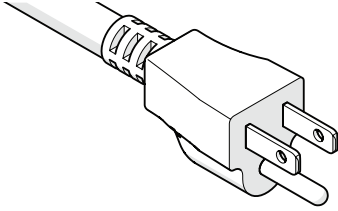
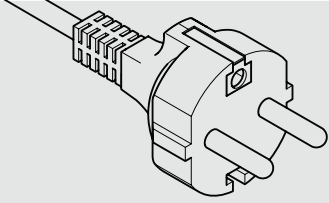
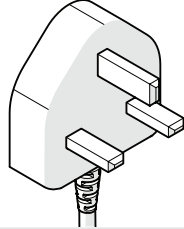
■ TERAX

Encoder Connector Type

Connector Type	Company/Instrument	Connector Type	Company/Instrument
B	Olympus OmniScan MX Zetec Topaz	G	Sonotron Isonic 25xx
C	Olympus Focus LT Zetec Z-Scan Eddyfi Ectane 2	U	Sonatest Veo / Prisma
E	Olympus OmniScan SX/MX2/X3 M2M MANTIS/GEKKO LEMO	V	Pragma PAUT
F	TD (<i>Technology Design</i>)	AD	Sonatest Veo / Prisma - Single Axis

NOTE: Additional encoder connector types are available. Contact JIREH for more information.

Power Cord Type

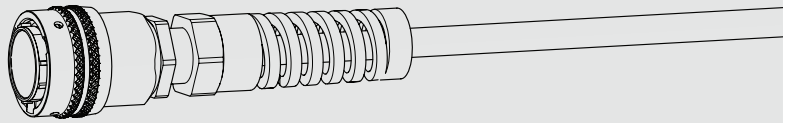
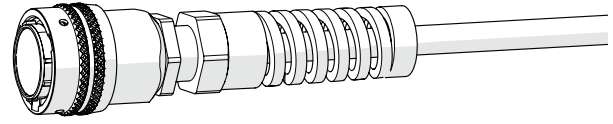
Connector Type	Part #	Power Cord	
N	SL032	North American	
E	SL039	European	
U	SL059	United Kingdom	
Z		No Cord	

Spare Parts

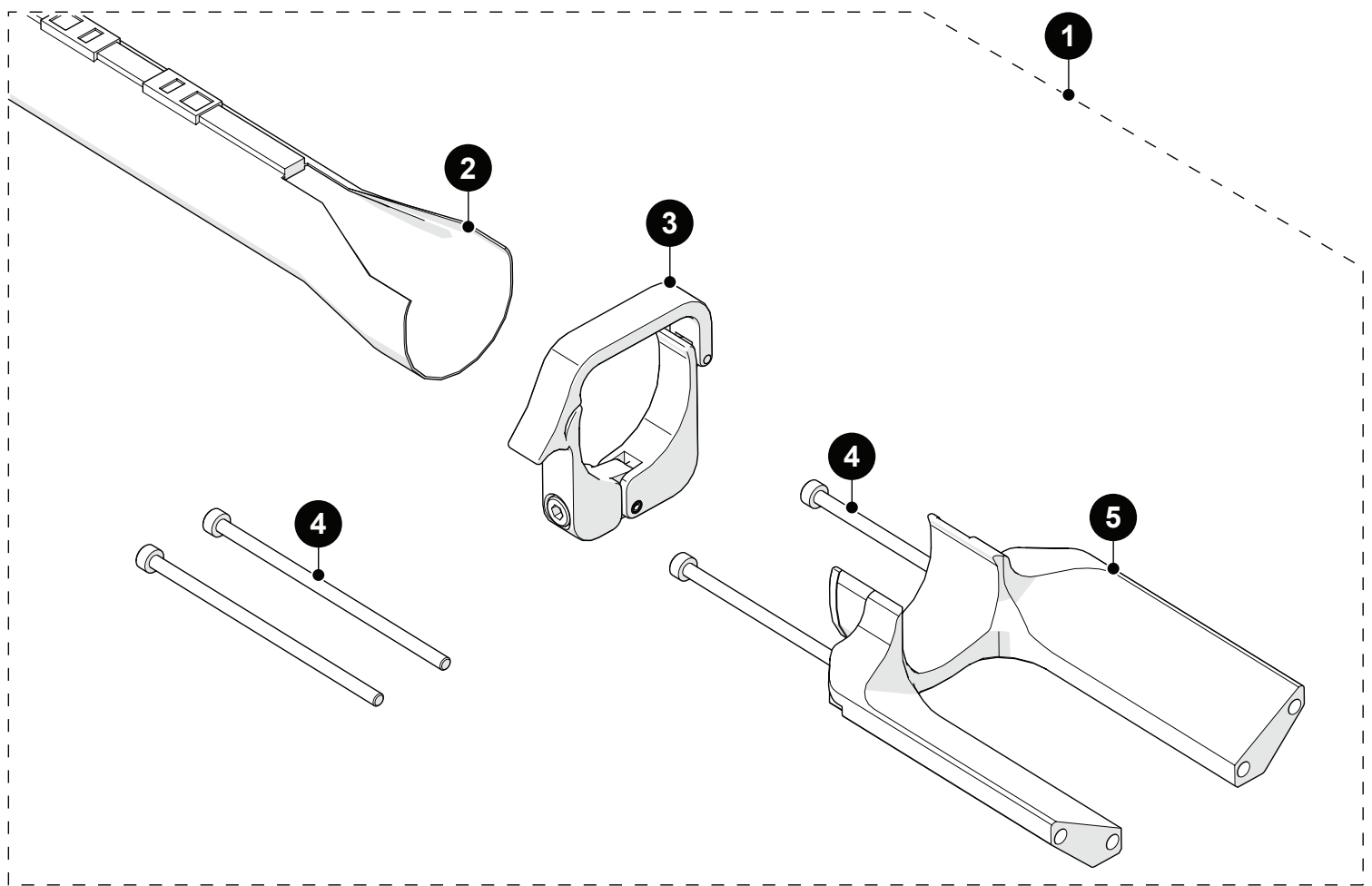


Umbilical, Ethernet Length

Length	Part #	Description
30	UMA044-30	30 m (98.4 ft)
60	UMA044-60	60 m (196.8 ft)



Cable Management, Dual Threaded Mount



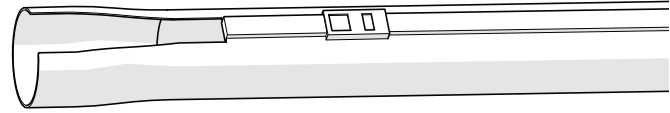
BOM ID	Part #	Description
1	ENG003-__	Cable Management, Dual Threaded Mount (see Cable Management Sleeving, Length)
2		see Cable Management Sleeving
3	DYS017	Cable Management Clamp, Large
4	MD049-070	SHCS, M3x0.5 X 70mm, SST
5	EN0031	Dual Threaded Mount

Spare Parts

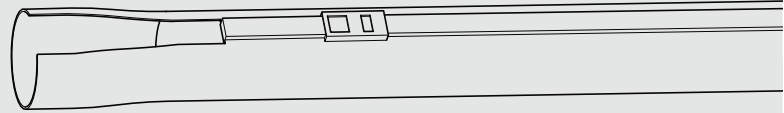
■ TERAX

Cable Management, Slewing

Length	Part #	Description
29.5	CX0147	29.5 m (96.8 ft)



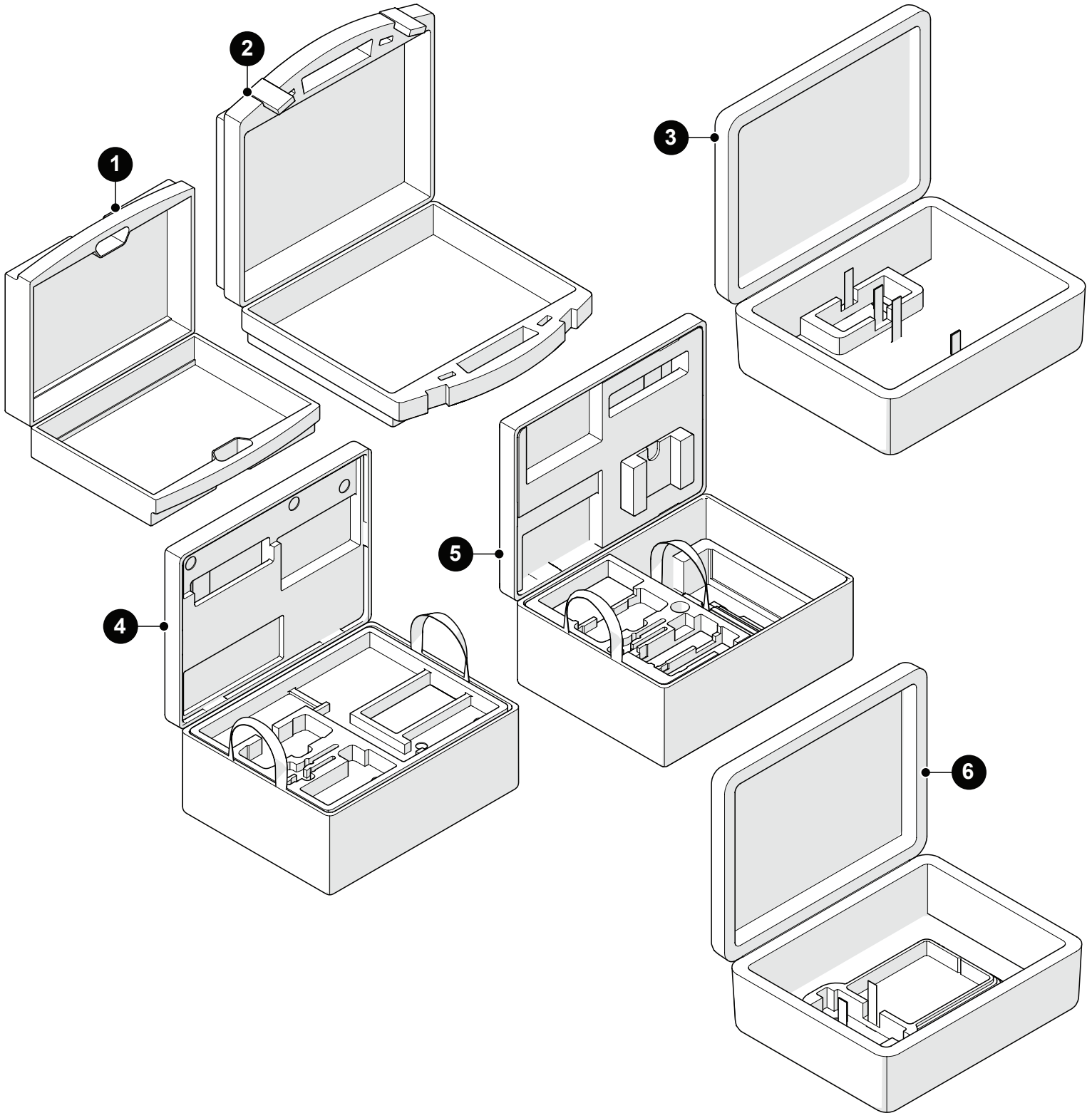
59.5	CX0509	59.5 m (195 ft)
------	--------	-----------------



Spare Parts

■ TERAX

Cases



BOM ID	Part #	Description
1	EA421	Umbilical Case
2	EA610	Umbilical Case (<i>large</i>)
3	CXA023	Umbilical / Probe Holder Frame Case
4	ENA003	TERAX Base Crawler Case
5	ENA004	TERAX Internal Crawler Case
6	CMA016	Motorized Pump/Umbilical Case