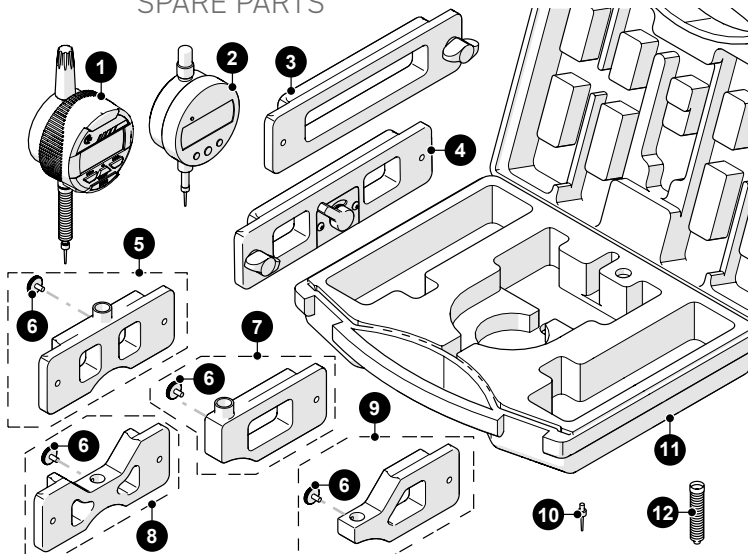


TROUBLESHOOTING

| Starrett Issue | Resolution: |
|---|--|
| CAL shows on screen | Slowly lift and lower the spindle until a value appears on the display. The device is now calibrated. |
| Err04 shows on screen (overspeed error) | Press and release the ZERO button. Wait till the screen shows CAL, then slowly lift and lower the spindle until a value appears on the display. |
| Mitutoyo Issue | Resolution |
| Error message B | Replace battery. <i>Note: The origin is cleared when the battery is replaced.</i> |
| Error message C | Condensation may have affected the unit. Turn off the device and wait 2 hours for thermal stabilization. If the message still appears, return indicator for service. |

SPARE PARTS



| BOM ID | Part # | Description |
|--------|---------|---|
| 1 | PGS008 | Starrett Digital Indicator: 0 - 2.54 cm (0 - 1.0 in), Rotating Face |
| 2 | PGS015 | Mitutoyo Digital Indicator: 0 - 1.27 cm (0 - 0.5 in) |
| 3 | PGS004 | Extension Arm |
| 4 | PGS005- | Magnetic Extension Arm (L or R available) |
| 5 | PGS006 | Starrett Centre Base |
| 6 | PGA007 | Knurled Knob, M3 x 0.5 x 6 mm, SST |
| 7 | PGS007 | Starrett Blind Side Base |
| 8 | PGS013 | Mitutoyo Centre Base |
| 9 | PGS012 | Mitutoyo Blind Side Base |
| 10 | EA179 | Indicator Tip |
| 11 | PGA007 | Pit Gage Case |
| 12 | EA592 | Bellows |



Jireh Industries
info@jireh.com
jireh.com

PG0025 Rev 03.2
Manual Pit Inspection Tool

SPECIFICATIONS

| | |
|--------------------------------|-----------------------------------|
| Starrett Range of motion | 0 - 2.54 cm (0 - 1.0 in) |
| Mitutoyo Range of motion | 0 - 1.27 cm (0 - 0.5 in) |
| Operating environment | -10° C (14° F) and 50° C (122° F) |
| Starrett Environmental sealing | IP67 (Waterproof) |
| Mitutoyo Environmental sealing | IP42 (Dustproof) |
| Starrett Battery requirement | USB rechargeable |
| Mitutoyo Battery requirement | 1 - SR44 battery |



WARNING Can be harmful to pacemaker and ICD wearers.
Stay at least 25 cm (10 in) away.

OPERATING INSTRUCTIONS

2.1. Starrett Digital Indicator (Fig. 1)

- A ON/OFF** Power button. Press and release to activate the indicator. Press and hold for 3 seconds to turn off.
- B IN/mm** Toggles the display between imperial and metric measurements.
- C ZERO** Place the gage on a known flat surface. Press and release the **ZERO** button to calibrate the unit. (*Do not move the gage for 2 seconds*).
- A +/-** Plus/minus sets the direction of the reading.

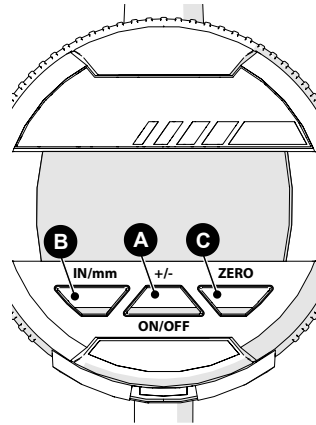


Fig. 1: Digital indicator

2.2. Mitutoyo Digital Indicator (Fig. 1)

- D in/mm** Toggles the display between imperial and metric measurements.
- E ORIGIN** Place the gage on a known flat surface. Press and hold the **ORIGIN** button for 2 seconds, then release to calibrate the unit.
- F ON/OFF** Power button. Press and release to activate the indicator. Press and release to deactivate.
- A +/-** Plus/minus sets the direction of the reading.

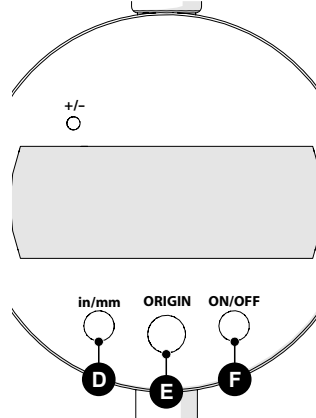


Fig. 2: Digital indicator

2.3. Extension Arms

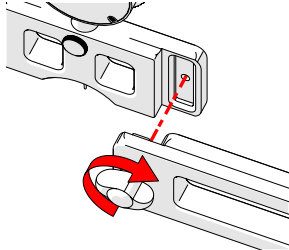


Fig. 3: Tighten thumb screw

- ▶ Align the receiving component holes (centre base, blind side base, arms) with the thumb screw (Fig. 3)
- ▶ Ensure correct arm orientation when using magnetic arms.
- ▶ Position magnetic arms farthest from the indicator for stability.
- ▶ A small bottom radius aids measurement on small-diameter pipes.

2.4. Indicator Adjustments

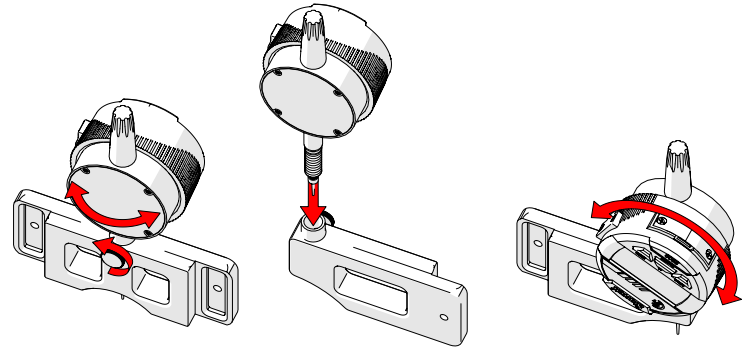


Fig. 4: Loosen to pivot indicator

Fig. 5: Centre base or blind side base

Fig. 6: Rotate indicator face

- ▶ Loosen the thumb screw to pivot the indicator when required (Fig. 4).
- ▶ Loosen the thumb screw to switch indicator for use with either base (Fig. 5).
- ▶ Rotate the Starrett indicator face during inverted scanning (Fig. 6).

2.5. Optional Magnetic Arm (Fig. 7)

- ▶ The red lever controls the amount of magnetic attraction.
- ▶ Pivot the lever left to disengage magnetism; pivot right to engage full magnetism.

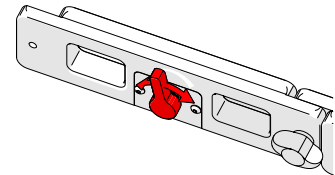


Fig. 7: Adjust magnetic attraction with lever

2.6. Blind Side Base (Fig. 8)

- ▶ Use to measure when centre base is not appropriate (*i.e. close to a weld or flange*).
- ▶ Pivot indicator 90° for additional clearance.

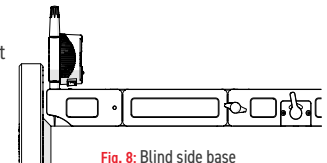


Fig. 8: Blind side base

OPERATION

- ▶ Assemble the required extension arms (2.3. Extension Arms).
- ▶ Place the PIT GAGE on a known flat surface. Press the zero/origin button (Fig. 1-C) (Fig. 2-E) holding the PIT GAGE in place for 2 seconds.
- ▶ Place indicator tip in surface variations for measurement.